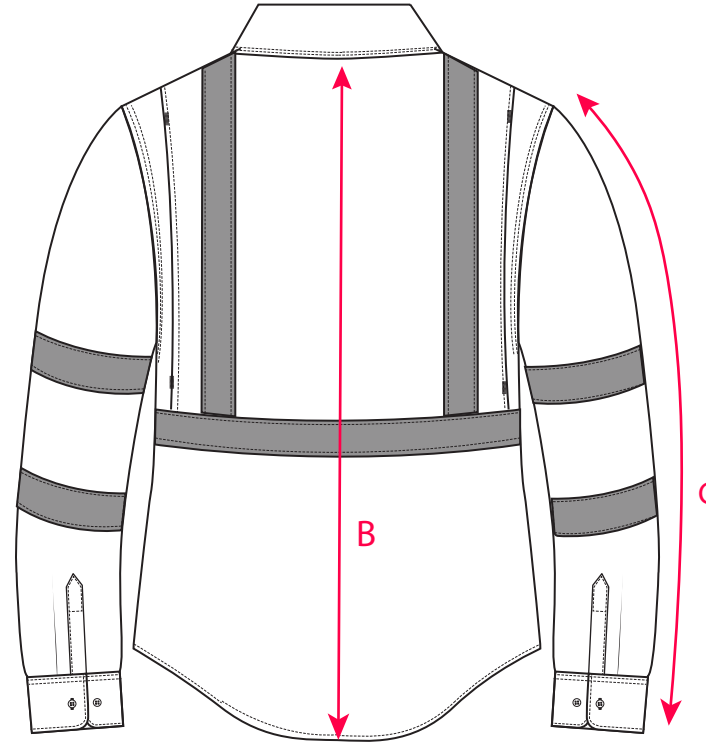
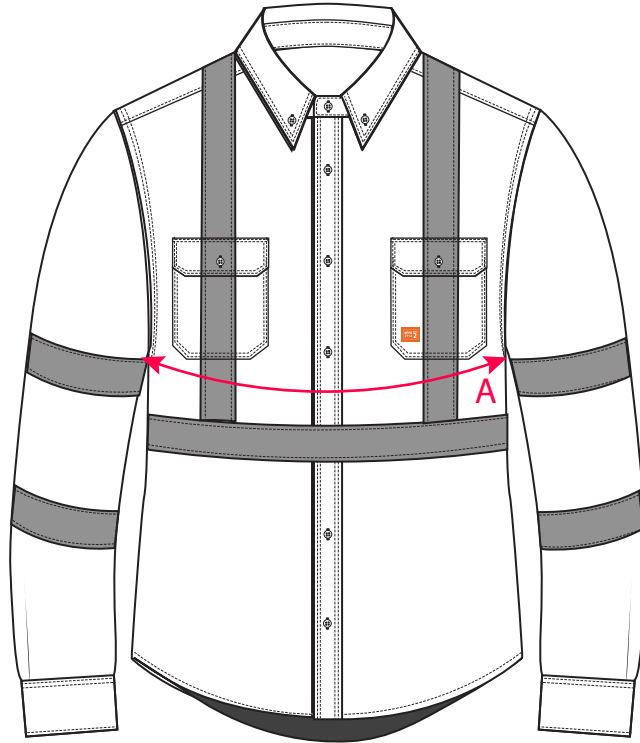


BASE STYLE: FR95

DESCRIPTION: Bizflame 88/12 Hi-Vis Lightweight FR Shirt

FABRIC: 88% Cotton, 12% Nylon

Yellow



| Descriptions  |   | S      | M      | L      | XL     | XXL    | 3XL    | 4XL    | 5XL    | 6XL    |
|---------------|---|--------|--------|--------|--------|--------|--------|--------|--------|--------|
| Chest Width   | A | 114.00 | 122.00 | 130.00 | 142.00 | 150.00 | 158.00 | 166.00 | 178.00 | 190.00 |
| Back Length   | B | 84.00  | 84.00  | 84.00  | 86.00  | 86.00  | 86.00  | 86.00  | 87.00  | 88.00  |
| sleeve length | C | 63.50  | 64.00  | 64.50  | 65.00  | 65.50  | 66.00  | 66.50  | 67.00  | 67.50  |