

SPEC SHEET + MEASUREMENTS

DISTRICT

District® Youth Perfect Tri® Long Sleeve Hoodie. DT139Y

Product photo



A lightweight tri-blend essential that's perfect all year round.

- 4.5-ounce (153 GSM)
- 50/25/25 polyester/combed ring spun cotton/rayon, 32 singles
- Tear-away label
- Shoulder to shoulder taping

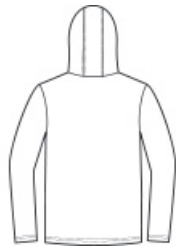
CARE INSTRUCTIONS

Machine wash cold with like colors. Non-chlorine bleach when needed. Tumble dry low. Cool iron if necessary.

Sketches



front



back

SPEC SHEET + MEASUREMENTS



District[®] Youth Perfect Tri[®] Long Sleeve Hoodie. DT139Y

PRODUCT MEASUREMENTS

	XS	S	M	L	XL
Body Length at Back	19	21	23	25	27
Chest	13 1/2	15	16 1/2	17 1/2	19
Size	2	4/6	8/10	12/14	16/18
Sleeve Length	22	25	27 1/2	30	33

Body Length at Back: Measured from high point shoulder to finished hem at back.

Chest: Measured across the chest one inch below armhole when laid flat.

Sleeve Length: Start at center of neck and measure down shoulder, down sleeve to hem.

SIZE CHARTS

	XS	S	M	L	XL
Chest	22-24	25-27	28-30	30-32	32-34
Size	4/5	6/8	10/12	14/16	18/20

SPEC SHEET + MEASUREMENTS



District® Youth Perfect Tri® Long Sleeve Hoodie. DT139Y

HOW TO MEASURE



CHEST

Measure under the arm and around the fullest part of the chest with arms down, keeping tape horizontal.

COLORS

Please note: PMS code information is shown only when an exact match is available.



Black Frost
PMS 426C



Deep Royal
PMS 7687C



Grey Frost
PMS COOL
GREY 11C



Navy Frost
PMS 2379C



White