

## SPEC SHEET + MEASUREMENTS



### Nike Long Sleeve Dri-FIT Stretch Tech Polo. 466364

#### Product photo



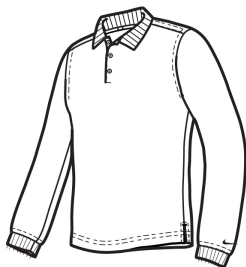
Long sleeves elevate this polo to another level of sophistication while Dri-FIT moisture management technology adds unparalleled performance. Stretch fabric for hassle-free swinging motion.

- 5-ounce, 100% polyester Dri-FIT fabric
- Flat knit collar and cuffs
- Heat transfer label for tag-free comfort
- Three-button placket
- Dyed-to-match buttons on White, Black and Midnight Navy
- White buttons on Varsity Red, Anthracite and Blue Sapphire
- Side vents
- Contrast embroidered Swoosh logo on lower left sleeve

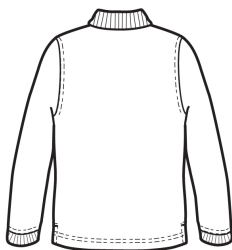
#### CARE INSTRUCTIONS

Machine wash cold. Wash inside out; wash with like colors. Do not use softeners. Do not use bleach. Tumble dry low. Do not iron. Do not dry clean.

#### Sketches



front



back

# SPEC SHEET + MEASUREMENTS



## Nike Long Sleeve Dri-FIT Stretch Tech Polo. 466364

### PRODUCT MEASUREMENTS

	XS	S	M	L	XL	2XL	3XL	4XL
Body Length at Back	27 1/4	28 1/2	29 1/2	30 1/2	32	33 1/2	34 1/2	35 1/2
Chest	19	20 1/2	22	23 1/2	25	26 1/2	28	29 1/2
Sleeve Length from Center Back	33 1/4	34	34 3/4	35 1/2	36 1/2	37 1/2	38 1/2	39 1/2

**Body Length at Back:** Measured from high point shoulder to finished hem at back.

**Chest:** Measured across the chest one inch below armhole when laid flat.

**Sleeve Length from Center Back:** Measure from Center Back neck to shoulder point to sleeve hem.

### SIZE CHARTS

	XS	S	M	L	XL	2XL	3XL	4XL
Chest	32-35	35 - 37 1/2	37 1/2 - 41	41 - 44	44 - 48 1/2	48 1/2 - 53 1/2	53 1/2 - 58	58 - 63

# SPEC SHEET + MEASUREMENTS



Nike Long Sleeve Dri-FIT Stretch Tech Polo. 466364

## HOW TO MEASURE

---



### **CHEST**

Measure under the arm and around the fullest part of the chest with arms down, keeping tape horizontal.