

# SPEC SHEET + MEASUREMENTS

**SPORT-TEK**

## Sport-Tek® Posi-UV® Pro Polo. ST520

### Product photo



Designed for game day or the work day, these breathable polos offer a soft, matte hand and deliver exceptional UV protection, PosiCharge color-locking technology and moisture wicking.

- 4-ounce, 100% polyester interlock with PosiCharge technology
- UPF rating of 50
- Removable tag for comfort and relabeling
- Self-fabric collar with collar stand
- Taped neck
- 3-button placket with dyed-to-match buttons
- Set-in, open hem sleeves

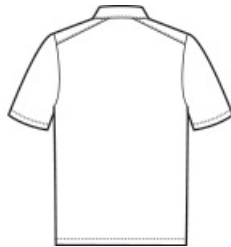
### CARE INSTRUCTIONS

Machine wash cold with like colors. Do not bleach do not use softener. Tumble dry low. Remove promptly. Cool iron on reverse side if needed. Do not dry clean.

### Sketches



front



back

# SPEC SHEET + MEASUREMENTS

**SPORT-TEK**

Sport-Tek® Posi-UV® Pro Polo. ST520

## PRODUCT MEASUREMENTS

	XS	S	M	L	XL	2XL	3XL	4XL
Body Length at Back	26 3/4	27 3/4	28 3/4	29 3/4	30 3/4	31 3/4	32 1/4	32 3/4
Chest	18	19 1/2	21	22 1/2	24	25 1/2	27 1/2	29 1/2
Sleeve Length	16 3/4	17 1/2	18 1/4	19	19 3/4	20 1/2	21 1/4	22

**Body Length at Back:** Measured from high point shoulder to finished hem at back.

**Chest:** Measured across the chest one inch below armhole when laid flat.

**Sleeve Length:** Start at center of neck and measure down shoulder, down sleeve to hem.

## SIZE CHARTS

	XS	S	M	L	XL	2XL	3XL	4XL
Chest	32-34	35-37	38-40	41-43	44-46	47-49	50-53	54-57

## HOW TO MEASURE



### CHEST

Measure under the arm and around the fullest part of the chest with arms down, keeping tape horizontal.

# SPEC SHEET + MEASUREMENTS



Sport-Tek® Posi-UV® Pro Polo. ST520

## COLORS

---

Please note: PMS code information is shown only when an exact match is available.



Black  
PMS BLACK  
C



Cardinal  
PMS 7421C



Dark Smoke  
Grey  
PMS 425C



Forest Green  
PMS 553C



Kelly Green  
PMS 341C



Sapphire  
PMS 7461C



True Navy  
PMS 533C



True Red  
PMS 200C



True Royal  
PMS 7687C



White