

SPEC SHEET + MEASUREMENTS

SPORT-TEK

Sport-Tek® Dry Zone® Colorblock Raglan Polo. T476

Product photo



The moisture-wicking, odor-fighting performance of Dry Zone technology in a colorblocked raglan sleeve polo.

- 3.9-ounce, 100% polyester mini pique
- 4-ounce, 100% polyester mesh insets
- Tag-free label
- Flat knit collar
- Taped neck
- 3-button placket with dyed-to-match buttons
- Mesh colorblocking at front and back raglan insets
- Raglan, open hem sleeves
- Side vents

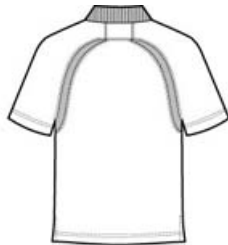
CARE INSTRUCTIONS

Machine wash cold, gentle cycle. Do not bleach. Cool iron, if needed. Do not dry clean. Wash and dry with like colors.

Sketches



front



back

SPEC SHEET + MEASUREMENTS

SPORT-TEK

Sport-Tek® Dry Zone® Colorblock Raglan Polo. T476

PRODUCT MEASUREMENTS

	XS	S	M	L	XL	2XL	3XL	4XL
Body Length at Back	28	29	30	31	32	33	33 1/2	34
Chest	18 1/2	20	21 1/2	23	24 1/2	26	28	30
Sleeve Length	17 3/4	18 1/2	19 1/4	20	20 3/4	21 1/2	22 1/4	23

Body Length at Back: Measured from high point shoulder to finished hem at back.

Chest: Measured across the chest one inch below armhole when laid flat.

Sleeve Length: Start at center of neck and measure down shoulder, down sleeve to hem.

SIZE CHARTS

	XS	S	M	L	XL	2XL	3XL	4XL
Chest	32-34	35-37	38-40	41-43	44-46	47-49	50-53	54-57

HOW TO MEASURE



CHEST

Measure under the arm and around the fullest part of the chest with arms down, keeping tape horizontal.

SPEC SHEET + MEASUREMENTS



Sport-Tek® Dry Zone® Colorblock Raglan Polo. T476

COLORS

Please note: PMS code information is shown only when an exact match is available.



Black/ White
PMS BLACK
C



Forest Green/
White
PMS 553C



Maroon/ White
PMS 504C



True Navy/
White
PMS 533C



True Red/
White
PMS 200C



True Royal/
White
PMS 7687C



White/ Black
PMS BLACK
C