

SPEC SHEET + MEASUREMENTS



Nike Sport Cover-Up. 400099

Product photo



An excellent choice for layering, this cover-up has a subtle texture and a soft hand.

- 9.75-ounce, 61/39 cotton/polyester
- Zip-through collar
- Open cuffs
- Open hem
- Contrast embroidered Swoosh logo on back neck

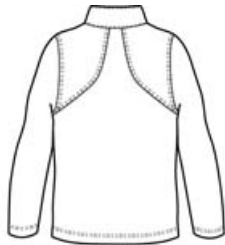
CARE INSTRUCTIONS

Machine wash cold. Wash inside out. Wash with like colors. Do not use softeners. Do not use bleach. Tumble dry low. Do not iron. Do not dry clean.

Sketches



front



back

SPEC SHEET + MEASUREMENTS



Nike Sport Cover-Up. 400099

PRODUCT MEASUREMENTS

	XS	S	M	L	XL	2XL	3XL	4XL
Body Length at Back	26 1/4	27 1/4	28 1/4	29 1/4	30 1/4	31 1/4	32 1/4	33 1/4
Chest	19 1/2	21	22 1/2	24	25 1/2	27	28 1/2	30
Sleeve Length	33 1/2	34 1/2	35 1/2	36 1/2	37 1/2	38 1/2	39 1/2	40 1/2

Body Length at Back: Measured from high point shoulder to finished hem at back.

Chest: Measured across the chest one inch below armhole when laid flat.

Sleeve Length: Start at center of neck and measure down shoulder, down sleeve to hem.

SIZE CHARTS

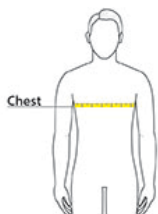
	XS	S	M	L	XL	2XL	3XL	4XL
Chest	32-35	35 - 37 1/2	37 1/2 - 41	41 - 44	44 - 48 1/2	48 1/2 - 53 1/2	53 1/2 - 58	58 - 63

SPEC SHEET + MEASUREMENTS



Nike Sport Cover-Up. 400099

HOW TO MEASURE



CHEST

Measure under the arm and around the fullest part of the chest with arms down, keeping tape horizontal.

COLORS

Please note: PMS code information is shown only when an exact match is available.



Anthracite
PMS 432C



Black
PMS
PROCESS
BLACK C



Starlight
PMS 2189C