

SPEC SHEET + MEASUREMENTS



Allmade® Unisex Organic French Terry Crewneck Sweatshirt. AL4004

Product photo



Ooh la la. Certified organic cotton makes these French terry beauties 100% comfortable. Plus, helping save the environment is always a good look.

- 8.3-ounce, 100% organic combed ring spun cotton French terry
- This product's carbon footprint has been measured and reduced through a combination of preferred materials and investing in carbon offset projects through the ClimeCo Certified Product™ Program
- 2x1 rib knit V inset at neck finished with coverstitch
- Raglan sleeves finished with coverstitch detail
- 2x1 rib knit neck, cuffs and hem
- Side seams
- Tear-away label

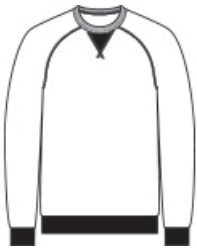
A C-FREE® Product

We start by reducing the product's impact by switching to at least 50% preferred materials. We then measure and reduce the total carbon footprint of each product in the C-FREE program—from cradle-to-grave—through the ClimeCo Certified Product™ Program. This certification purchases third-party, verified carbon offsets through ClimeCo.

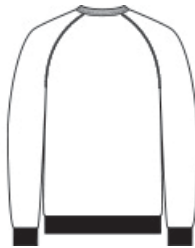
CARE INSTRUCTIONS

Machine Wash Cold With Like Colors. Do Not Bleach. Tumble Dry Low. Warm Iron If Needed.

Sketches



front



back

SPEC SHEET + MEASUREMENTS



Allmade® Unisex Organic French Terry Crewneck
Sweatshirt. AL4004

PRODUCT MEASUREMENTS

	XS	S	M	L	XL	2XL	3XL	4XL
Body Length at Back	26 1/2	27 1/2	28 1/2	29 1/2	30 1/2	31 1/2	32	32 1/2
Chest	19 1/2	21	22 1/2	24	25 1/2	27	29	31
Sleeve Length from Center Back	34 3/4	35 1/2	36 1/4	37	37 3/4	38 1/2	39 1/4	40

Body Length at Back: Measured from high point shoulder to finished hem at back.

Chest: Measured across the chest one inch below armhole when laid flat.

Sleeve Length from Center Back: Measure from Center Back neck to shoulder point to sleeve hem.

SIZE CHARTS

	XS	S	M	L	XL	2XL	3XL	4XL
Chest	32-34	35-37	38-40	41-43	44-46	47-49	50-53	54-57

SPEC SHEET + MEASUREMENTS



Allmade® Unisex Organic French Terry Crewneck
Sweatshirt. AL4004

HOW TO MEASURE



CHEST

Measure under the arm and around the fullest part of the chest with arms down, keeping tape horizontal.

COLORS

Please note: PMS code information is shown only when an exact match is available.



Deep Black
PMS BLACK
C



Granite Grey
Heather
PMS COOL
GRAY 7C



Night Sky
Navy
PMS 533C



Terrain Grey
PMS 7540C