

SPEC SHEET + MEASUREMENTS



Nike Therma-FIT Pullover Fleece Hoodie. CN9473

Product photo



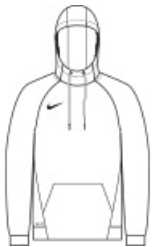
Nike has elevated the classic hoodie by improving this year-round essential with incredibly warm Therma-FIT fabric which breathes and manages moisture.

- 7.4-ounce, 100% polyester Therma-FIT fabric
- Three-panel hood
- Front pouch pocket
- Open cuffs
- Contrast heat transfer Swoosh logo on right chest

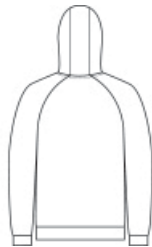
CARE INSTRUCTIONS

Machine Wash Cold (30C). Wash Inside Out. Wash with Like Colors. Do Not Use Softeners. Do Not Use Bleach. Tumble Dry Low. Do Not Iron. Do Not Dry Clean.

Sketches



front



back

SPEC SHEET + MEASUREMENTS



Nike Therma-FIT Pullover Fleece Hoodie. CN9473

PRODUCT MEASUREMENTS

	S	M	L	XL	2XL	3XL	4XL
Body Length at Back	28 1/2	28 7/8	29 5/8	30 3/8	31 1/4	32	32 3/4
Chest	21 1/8	22 5/8	24 1/4	25 3/4	28 1/8	30 1/8	32 1/8
Sleeve Length from Center Back	35 1/2	36	36 1/2	37 1/4	38	38 5/8	39 3/8

Body Length at Back: Measured from high point shoulder to finished hem at back.

Chest: Measured across the chest one inch below armhole when laid flat.

Sleeve Length from Center Back: Measure from Center Back neck to shoulder point to sleeve hem.

SIZE CHARTS

	XS	S	M	L	XL	2XL	3XL	4XL
Chest	32-35	35-37 1/2	37 1/2-41	41-44	44-48 1/2	48 1/2 -53 1/2	53 1/2 - 58	58-63

SPEC SHEET + MEASUREMENTS



Nike Therma-FIT Pullover Fleece Hoodie. CN9473

HOW TO MEASURE



CHEST

Measure under the arm and around the fullest part of the chest with arms down, keeping tape horizontal.

COLORS

Please note: PMS code information is shown only when an exact match is available.



Team Anthracite
PMS 7540C



Team Dark Green
PMS 350C



Team Dark Maroon
PMS 504C



Team Navy
PMS 533C



Team Royal
PMS 7687C



Team Scarlet
PMS 186C