

## SPEC SHEET + MEASUREMENTS



### Nike Therma-FIT 1/4-Zip Fleece. CN9492

#### Product photo



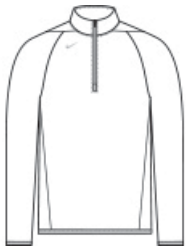
Nike has elevated this style as a year-round workout essential with incredibly warm, insulating Therma-FIT fabric which breathes and manages moisture.

- 7.4-ounce, 60/40 recycled polyester/polyester Therma-FIT fabric
- Zip-through collar
- Elastic binding at the open cuffs
- Open drop tail hem
- Contrast heat transfer Swoosh logo on right chest

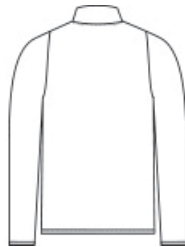
#### CARE INSTRUCTIONS

Machine Wash Cold (30C). Wash Inside Out. Wash With Like Colors. Do Not Use Softeners. Do Not Use Bleach. Tumble Dry Low. Do Not Iron. Do Not Dry Clean.

#### Sketches



front



back

# SPEC SHEET + MEASUREMENTS



Nike Therma-FIT 1/4-Zip Fleece. CN9492

## PRODUCT MEASUREMENTS

	S	M	L	XL	2XL	3XL
Body Length at Back	28 3/8	28 7/8	29 5/8	30 5/8	31 1/4	32
Chest	21 1/4	22 7/8	24 3/8	26 3/8	28 3/8	30 3/8
Sleeve Length from Center Back	31 7/8	32 1/2	32 7/8	33 3/8	33 7/8	34 1/2

**Body Length at Back:** Measured from high point shoulder to finished hem at back.

**Chest:** Measured across the chest one inch below armhole when laid flat.

**Sleeve Length from Center Back:** Measure from Center Back neck to shoulder point to sleeve hem.

## SIZE CHARTS

	S	M	L	XL	2XL	3XL	4XL
Chest	35-37 1/2	37 1/2-41	41-44	44-48 1/2	48 1/2-53 1/2	53 1/2-58	58-63

# SPEC SHEET + MEASUREMENTS



Nike Therma-FIT 1/4-Zip Fleece. CN9492

## HOW TO MEASURE

---



### CHEST

Measure under the arm and around the fullest part of the chest with arms down, keeping tape horizontal.

## COLORS

---

Please note: PMS code information is shown only when an exact match is available.



Team  
Anthracite  
PMS 7540C



Team Black  
PMS BLACK  
C



Team Dark  
Green  
PMS 350C



Team Navy  
PMS 533C



Team Royal  
PMS 7687C



Team Scarlet  
PMS 186C