

SPEC SHEET + MEASUREMENTS



Cotopaxi® Women's Amado 1/2-Zip Fleece. COTOW1692

Product photo



Made with fully recycled fleece, Amado Fleece delivers sustainably-minded comfort. These colorblocked pieces pair perfectly with your favorite tee or down jacket, but they're also awesome worn solo.

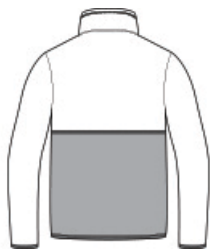
- 5-ounce, 100% recycled polyester fleece
- Zip-through collar
- Exposed zipper with contrast trim
- Elastic cuff binding
- Elastic binding at hem
- Woven Cotopaxi logo on left hem

Care Instructions Machine Wash Cold. Wash With Like Colors. Do Not Bleach. Tumble Dry Low. Do Not Iron. Do Not Dry Clean.

Sketches



front



back

SPEC SHEET + MEASUREMENTS



Cotopaxi® Women's Amado 1/2-Zip Fleece. COTOW1692

PRODUCT MEASUREMENTS

	S	M	L	XL	2XL
Body Length at Back	25 3/8	26 1/8	26 7/8	27 3/4	28 1/2
Bust	19 1/2	20 5/8	22 1/8	23 5/8	25 3/8
Size	4/6	8/10	12/14	16/18	20
Sleeve Length from Center Back	32 7/8	33 3/8	34 1/4	35	35 3/4

Body Length at Back: Measured from high point shoulder to finished hem at back.

Bust: Measured across the chest one inch below armhole when laid flat.

Sleeve Length from Center Back: Measure from Center Back neck to shoulder point to sleeve hem.

SIZE CHARTS

	XS	S	M	L	XL	2XL
Bust	32 1/2-33 1/2	34 1/2-35 1/2	36 1/2-37 1/2	38 1/2-41	42-44	45-47
Size	0/2	4/6	8/10	12/14	16/18	20

SPEC SHEET + MEASUREMENTS



Cotopaxi® Women's Amado 1/2-Zip Fleece. COTOW1692

HOW TO MEASURE



BUST

Measure under the arm and around the fullest part of the bust with arms down, keeping tape horizontal.

COLORS

Please note: PMS code information is shown only when an exact match is available.



Atlantic/ Black
PMS 7692C



Canyon/
Maritime
PMS 7417



Cream/ Fjord
PMS 4240C



Smoke/
Cinder
PMS 4276C