

# SPEC SHEET + MEASUREMENTS



## Carhartt® Rain Defender® Paxton Heavyweight Hooded Zip-Front Sweatshirt. CT100614

### Product photo



For those days when a heavy jacket is just too much to wear on the job, this durable, water-repellent sweatshirt is the solution.

- 13-ounce, 75/25 cotton/poly blend or 55/45 cotton/poly blend with Rain Defender durable water-repellent finish (Black, New Navy)\*
- 55/45 cotton/poly blend (Carbon Heather)
- Attached jersey-lined three-piece hood with drawcord closure
- Antique-finish brass front zipper
- Two front hand warmer pockets with hidden security pocket inside
- Stretchable, spandex-reinforced, rib knit cuffs and waistband
- Carhartt label sewn on left hand warmer pocket
- Loose fit

*\*Please note: Select colors in Carhartt fleece are currently transitioning from a 75/25 cotton/poly blend to a 55/45 cotton/poly blend. Weight and fabric properties remain the same. Your order may contain a combination of both fabrics.*

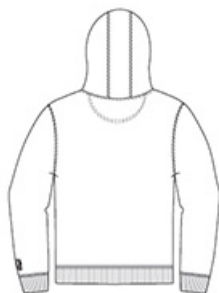
### CARE INSTRUCTIONS

Machine wash cold with like colors, Do not bleach, Tumble dry low remove promptly.

### Sketches



front



back

# SPEC SHEET + MEASUREMENTS



## Carhartt® Rain Defender® Paxton Heavyweight Hooded Zip-Front Sweatshirt. CT100614

### PRODUCT MEASUREMENTS

	S	M	L	XL	2XL	3XL	4XL
Body Length at Back	28	29	29	30	30	31	31
Chest	22 1/2	24 1/2	26 1/2	28 1/2	30 1/2	32 1/2	34 1/2
Sleeve Length from Center Back	35 7/8	36 5/8	37 3/8	38 1/8	38 7/8	39 3/8	39 7/8

**Body Length at Back:** Measured from high point shoulder to finished hem at back.

**Chest:** Measured across the chest one inch below armhole when laid flat.

**Sleeve Length from Center Back:** Measure from Center Back neck to shoulder point to sleeve hem.

### SIZE CHARTS

	S	M	L	XL	2XL	3XL	4XL
Chest	34-36	38-40	42-44	46-48	50-52	54-56	58-60

# SPEC SHEET + MEASUREMENTS



Carhartt® Rain Defender® Paxton Heavyweight Hooded  
Zip-Front Sweatshirt. CT100614

## HOW TO MEASURE

---



### CHEST

Measure under the arm and around the fullest part of the chest with arms down, keeping tape horizontal.

## COLORS

---

Please note: PMS code information is shown only when an exact match is available.



Black  
PMS BLACK  
C



Carbon  
Heather  
PMS 7540C



New Navy  
PMS 533C