

SPEC SHEET + MEASUREMENTS



Carhartt® Rain Defender® Paxton Heavyweight Hooded Zip Mock Sweatshirt. CT100617

Product photo



Rain Defender durable water-repellent technology has your back all day, every day in this rugged mock sweatshirt that stands up to weather and tough jobs.

- 13-ounce, 75/25 cotton/poly blend or 55/45 cotton/poly blend with Rain Defender durable water-repellent finish (Black, New Navy)*
- 55/45 cotton/poly blend with Rain Defender durable water-repellent finish (Carbon Heather)
- Attached jersey-lined three-piece hood with drawcord closure
- Mock neck collar with 8-inch antique-finish brass zipper
- Front hand warmer pocket with hidden security pocket inside
- Stretchable, spandex-reinforced, rib knit cuffs and waistband
- Carhartt label sewn on hand warmer pocket
- Loose fit

**Please note: Select colors in Carhartt fleece are currently transitioning from a 75/25 cotton/poly blend to a 55/45 cotton/poly blend. Weight and fabric properties remain the same. Your order may contain a combination of both fabrics.*

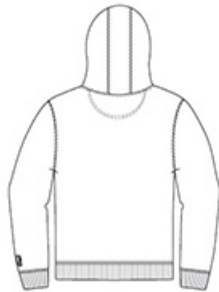
CARE INSTRUCTIONS

Machine wash cold with like colors, Do not bleach, Tumble dry low remove promptly.

Sketches



front



back

SPEC SHEET + MEASUREMENTS



Carhartt® Rain Defender® Paxton Heavyweight Hooded Zip Mock Sweatshirt. CT100617

PRODUCT MEASUREMENTS

| | S | M | L | XL | 2XL | 3XL | 4XL |
|--------------------------------|--------|--------|--------|--------|--------|--------|--------|
| Body Length at Back | 28 | 29 | 29 | 30 | 30 | 31 | 31 |
| Chest | 22 1/2 | 24 1/2 | 26 1/2 | 28 1/2 | 30 1/2 | 32 1/2 | 34 1/2 |
| Sleeve Length from Center Back | 35 7/8 | 36 5/8 | 37 3/8 | 38 1/8 | 38 7/8 | 39 3/8 | 39 7/8 |

Body Length at Back: Measured from high point shoulder to finished hem at back.

Chest: Measured across the chest one inch below armhole when laid flat.

Sleeve Length from Center Back: Measure from Center Back neck to shoulder point to sleeve hem.

SIZE CHARTS

| | S | M | L | XL | 2XL | 3XL | 4XL |
|-------|-------|-------|-------|-------|-------|-------|-------|
| Chest | 34-36 | 38-40 | 42-44 | 46-48 | 50-52 | 54-56 | 58-60 |

SPEC SHEET + MEASUREMENTS



Carhartt® Rain Defender® Paxton Heavyweight Hooded
Zip Mock Sweatshirt. CT100617

HOW TO MEASURE



CHEST

Measure under the arm and around
the fullest part of the chest with arms
down, keeping tape horizontal.

COLORS

Please note: PMS code information is shown only when an exact match is available.



Black
PMS BLACK
C



Carbon
Heather
PMS 7540C



New Navy
PMS 533C