

# SPEC SHEET + MEASUREMENTS



## Carhartt® Midweight Hooded Zip-Front Sweatshirt. CTK122

### Product photo



Carhartt's Midweight Hooded Zip-Front Sweatshirt brings considerable comfort to cool-weather worksites.

- 10.5-ounce, 50/50 cotton/poly blend or 59/41 cotton/poly blend (Black, Carbon Heather, Moss, New Navy)\*
- 50/50 cotton/poly blend (Brite Lime, Brite Orange)
- 70/30 cotton/poly blend (Heather Grey)
- Attached three-piece hood with drawcord closure
- Full-length brass front zipper
- Two front hand warmer pockets
- Stretchable, spandex-reinforced, rib knit cuffs and waistband
- Carhartt-strong, triple-stitching on pocket
- Carhartt label sewn on left hand warmer pocket
- Loose fit

*\*Please note: Select colors in Carhartt fleece are currently transitioning from a 50/50 cotton/poly blend to a 59/41 cotton/poly blend. Weight and fabric properties remain the same. Your order may contain a combination of both fabrics.*

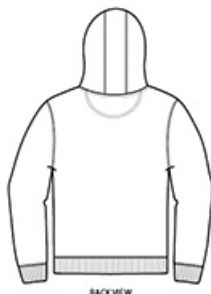
### CARE INSTRUCTIONS

Machine wash cold with like colors, Do not bleach, Tumble dry low remove promptly.

### Sketches



front



back

# SPEC SHEET + MEASUREMENTS



## Carhartt® Midweight Hooded Zip-Front Sweatshirt. CTK122

### PRODUCT MEASUREMENTS

|                                | S      | M      | L      | XL     | 2XL    | 3XL    | 4XL    |
|--------------------------------|--------|--------|--------|--------|--------|--------|--------|
| Body Length at Back            | 28     | 29     | 29     | 30     | 30     | 31     | 31     |
| Chest                          | 22     | 24     | 26     | 28     | 30     | 32     | 34     |
| Sleeve Length from Center Back | 35 7/8 | 36 5/8 | 37 3/8 | 38 1/8 | 38 7/8 | 39 3/8 | 39 7/8 |

**Body Length at Back:** Measured from high point shoulder to finished hem at back.

**Chest:** Measured across the chest one inch below armhole when laid flat.

**Sleeve Length from Center Back:** Measure from Center Back neck to shoulder point to sleeve hem.

### SIZE CHARTS

|       | S     | M     | L     | XL    | 2XL   | 3XL   | 4XL   |
|-------|-------|-------|-------|-------|-------|-------|-------|
| Chest | 34-36 | 38-40 | 42-44 | 46-48 | 50-52 | 54-56 | 58-60 |

# SPEC SHEET + MEASUREMENTS



Carhartt® Midweight Hooded Zip-Front Sweatshirt.  
CTK122

## HOW TO MEASURE

---



### CHEST

Measure under the arm and around the fullest part of the chest with arms down, keeping tape horizontal.

## COLORS

---

Please note: PMS code information is shown only when an exact match is available.



Black  
PMS BLACK  
C



Brite Lime



Brite Orange



Carbon  
Heather  
PMS 7540C



Heather Grey  
PMS COOL  
GREY 6C



Moss  
PMS 7770C



New Navy  
PMS 533C