

SPEC SHEET + MEASUREMENTS



Carhartt® Tall Midweight Hooded Sweatshirt. CTTK121

Product photo



Sometimes Mother Nature can't make up her mind. This sweatshirt works perfectly as a layer or by itself, allowing you to adapt with the weather.

- 10.5-ounce, 50/50 cotton/poly blend or 59/41 cotton/poly blend (Black, Carbon Heather, Moss, New Navy)*
- 70/30 cotton/poly blend (Heather Grey)
- Attached three-piece hood with drawcord closure
- Front hand warmer pocket
- Stretchable, spandex-reinforced, rib knit cuffs and waistband
- Carhartt-strong, triple-stitched main seams
- Carhartt label sewn on hand warmer pocket
- Loose fit

**Please note: Select colors in Carhartt fleece are currently transitioning from a 50/50 cotton/poly blend to a 59/41 cotton/poly blend. Weight and fabric properties remain the same. Your order may contain a combination of both fabrics.*

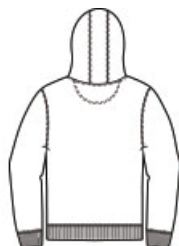
CARE INSTRUCTIONS

Machine Wash Cold Like Colors. Do Not Bleach. Tumble Dry Low.

Sketches



front



back

SPEC SHEET + MEASUREMENTS



Carhartt® Tall Midweight Hooded Sweatshirt. CTTK121

PRODUCT MEASUREMENTS

	LT	XLT	2XLT	3XLT
Body Length at Back	31	32	32	33
Chest	26	28	30	32
Sleeve Length from Center Back	39 3/8	40 1/8	40 7/8	41 3/8

Body Length at Back: Measured from high point shoulder to finished hem at back.

Chest: Measured across the chest one inch below armhole when laid flat.

Sleeve Length from Center Back: Measure from Center Back neck to shoulder point to sleeve hem.

SIZE CHARTS

	LT	XLT	2XLT	3XLT
Chest	42-44	46-48	50-52	54-56

SPEC SHEET + MEASUREMENTS



Carhartt® Tall Midweight Hooded Sweatshirt. CTTK121

HOW TO MEASURE



CHEST

Measure under the arm and around the fullest part of the chest with arms down, keeping tape horizontal.

COLORS

Please note: PMS code information is shown only when an exact match is available.



Black
PMS BLACK
C



Carbon
Heather
PMS 7540C



Heather Grey
PMS COOL
GREY 6C



Moss
PMS 7770C



New Navy
PMS 533C