

SPEC SHEET + MEASUREMENTS



New Era® Women's STS 1/2-Zip. LNEA541

Product photo



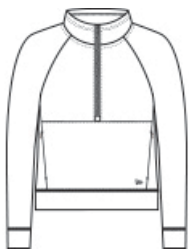
A modern twist on heritage style, this 1/2-zip is a perfect layering piece with its smooth face, jacquard interior and pique-like texture.

- 7.8-ounce, 56/44 cotton/poly double knit jacquard
- Heat transfer label for tag-free comfort
- Metaluxe® zipper
- Front pouch pocket with invisible side zippers
- Embroidered New Era flag logo on pocket

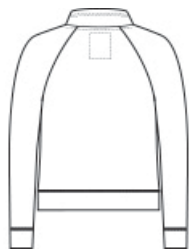
CARE INSTRUCTIONS

Machine Wash Cold With Like Colors. Do Not Use Fabric Softener. Do Not Bleach. Tumble Dry Low. Remove Promptly. Cool Iron If Necessary.

Sketches



front



back

SPEC SHEET + MEASUREMENTS



New Era® Women's STS 1/2-Zip. LNEA541

PRODUCT MEASUREMENTS

	XS	S	M	L	XL	2XL	3XL	4XL
Body Length at Back	22 1/2	23	23 1/2	24	24 1/2	25	25 1/2	26
Bust	19 1/2	20 1/2	21 1/2	23	24 1/2	26	28	30
Size	2	4/6	8/10	12/14	16/18	20/22	24/26	28/30
Sleeve Length from Center Back	31 1/4	31 3/4	32 1/4	32 7/8	33 1/2	34 1/8	34 1/2	34 7/8

Body Length at Back: Measured from high point shoulder to finished hem at back.

Bust: Measured across the chest one inch below armhole when laid flat.

Sleeve Length from Center Back: Measure from Center Back neck to shoulder point to sleeve hem.

SIZE CHARTS

	XS	S	M	L	XL	2XL	3XL	4XL
Bust	32-34	35-36	37-38	39-41	42-44	45-47	48-51	52-55
Size	2	4/6	8/10	12/14	16/18	20/22	24/26	28/30

SPEC SHEET + MEASUREMENTS



New Era® Women's STS 1/2-Zip. LNEA541

HOW TO MEASURE



BUST

Measure under the arm and around the fullest part of the bust with arms down, keeping tape horizontal.

COLORS

Please note: PMS code information is shown only when an exact match is available.



Black
PMS BLACK
C



Fan White



Graphite
PMS 7540C