

SPEC SHEET + MEASUREMENTS



OGIO® Women's Motion 1/4-Zip. LOG153

Product photo



Set yourself in motion with this elevated, easy moving 1/4-zip that feels lux and performs with pill and snag resistance—whether you're on the job or on the go.

- 6.5-ounce, 84/10/6 poly/rayon/spandex with stay-cool wicking technology
- UPF rating of 30
- OGIO heat transfer label for tag-free comfort
- Black reverse coil zipper with black metal zipper pull
- Invisible side seam zippered valuables pocket with cord zipper pull and silicone-dipped ends
- Thumbholes
- Embroidered dyed-to-match O logo icon at left hem
- Curved hem

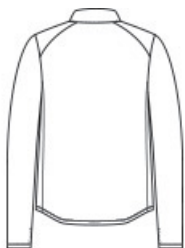
CARE INSTRUCTIONS

Machine Wash Cold With Like Colors. Do Not Use Fabric Softener. Do Not Bleach. Tumble Dry Low. Cool Iron If Necessary.

Sketches



front



back

SPEC SHEET + MEASUREMENTS



OGIO® Women's Motion 1/4-Zip. LOG153

PRODUCT MEASUREMENTS

	XS	S	M	L	XL	2XL	3XL
Body Length at Back	24 3/4	25 1/4	25 3/4	26 1/4	26 3/4	27 3/4	28 1/4
Bust	17 1/2	18 1/2	19 1/2	21	22 1/2	26	28
Size	2	4/6	8/10	12/14	16/18	20/22	24/26
Sleeve Length from Center Back	31 3/4	32 1/4	32 3/4	33 3/8	34	35	35 3/8

Body Length at Back: Measured from high point shoulder to finished hem at back.

Bust: Measured across the chest one inch below armhole when laid flat.

Sleeve Length from Center Back: Measure from Center Back neck to shoulder point to sleeve hem.

SIZE CHARTS

	XS	S	M	L	XL	2XL	3XL	4XL
Bust	32-34	35-36	37-38	39-41	42-44	45-47	48-51	52-55
Size	2	4/6	8/10	12/14	16/18	20/22	24/26	28/30

SPEC SHEET + MEASUREMENTS



OGIO® Women's Motion 1/4-Zip. LOG153

HOW TO MEASURE



BUST

Measure under the arm and around the fullest part of the bust with arms down, keeping tape horizontal.

COLORS

Please note: PMS code information is shown only when an exact match is available.



Blacktop
PMS BLACK
C



Blue Mist
PMS 2158C



Greystone
PMS COOL
GREY 7C