

# SPEC SHEET + MEASUREMENTS

**SPORT-TEK**

## Sport-Tek® Women's PosiCharge® Tri-Blend Wicking Fleece Hooded Pullover. LST296

### Product photo



Amazing tri-blend softness, color-locking PosiCharge technology and moisture-wicking performance make this hooded pullover ideal for athletes and fans.

- 7.1-ounce, 75/13/12 poly/cotton/rayon with PosiCharge technology
- Tear-away removable label
- Three-panel hood
- Hood and neck taping
- Front princess seams
- Thumbholes to keep hands warm
- Self-fabric cuffs and hem
- Front pouch pocket
- Drop tail hem

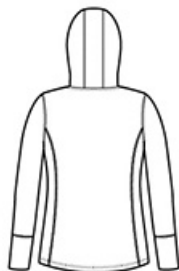
### CARE INSTRUCTIONS

Machine wash cold with like colors: only non-chlorine bleached when needed, tumble dry low, do not use fabric softener, remove promptly, cool iron if necessary, do not dry clean.

### Sketches



front



back

# SPEC SHEET + MEASUREMENTS

**SPORT-TEK**

Sport-Tek® Women's PosiCharge® Tri-Blend Wicking Fleece Hooded Pullover. LST296

## PRODUCT MEASUREMENTS

	XS	S	M	L	XL	XXL	3XL	4XL
Body Length at Back	27 3/4	28 1/4	28 3/4	29 1/4	29 3/4	30 1/4	30 3/4	31 1/4
Bust	18 1/4	19 1/4	20 1/4	21 3/4	23 1/4	24 3/4	26 3/4	28 3/4
Size	2	4/6	8/10	12/14	16/18	20/22	24/26	28/30
Sleeve Length	33	33 1/2	34	34 5/8	35 1/4	35 7/8	36 1/4	36 5/8

**Body Length at Back:** Measured from high point shoulder to finished hem at back.

**Bust:** Measured across the chest one inch below armhole when laid flat.

**Sleeve Length:** Start at center of neck and measure down shoulder, down sleeve to hem.

## SIZE CHARTS

	XS	S	M	L	XL	XXL	3XL	4XL
Bust	32-34	35-36	37-38	39-41	42-44	45-47	48-51	52-55
Size	2	4/6	8/10	12/14	16/18	20/22	24/26	28/30

# SPEC SHEET + MEASUREMENTS



Sport-Tek® Women's PosiCharge® Tri-Blend Wicking Fleece Hooded Pullover. LST296

## HOW TO MEASURE

---



### BUST

Measure under the arm and around the fullest part of the bust with arms down, keeping tape horizontal.

## COLORS

---

Please note: PMS code information is shown only when an exact match is available.



Black Triad  
Solid  
PMS BLACK  
C



Dark Grey  
Heather  
PMS COOL  
GRAY 11C