

SPEC SHEET + MEASUREMENTS



New Era® Stand Out 1/4-Zip. NEA515

Product photo



Whether you're cheering from the stands or heading to the office, elevate your look with this 1/4-zip constructed from 100% recycled material.

- 5.7-ounce, 100% recycled polyester
- This product's carbon footprint has been measured and reduced through a combination of preferred materials and investing in carbon offset projects through the ClimeCo Certified Product™ Program
- New Era logo zipper pull
- Drop hem
- Embroidered New Era logo at hem

A C-FREE® Product

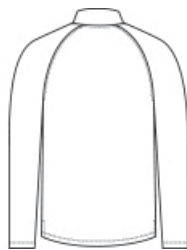
We start by reducing the product's impact by switching to at least 50% preferred materials. We then measure and reduce the total carbon footprint of each product in the C-FREE program—from cradle-to-grave—through the ClimeCo Certified Product™ Program. This certification purchases third-party, verified carbon offsets through ClimeCo.

Care Instructions Machine Wash Cold With Like Colors. Do Not Use Fabric Softner. Only Non-Chlorine Bleach, When Needed. Tumble Dry Low. Remove Promptly. Cool Iron, If Necessary.

Sketches



front



back

SPEC SHEET + MEASUREMENTS



New Era® Stand Out 1/4-Zip. NEA515

PRODUCT MEASUREMENTS

| | XS | S | M | L | XL | 2XL | 3XL | 4XL |
|-----------------------------------|--------|--------|--------|--------|--------|--------|--------|--------|
| Body Length at Back | 27 1/2 | 28 1/2 | 29 1/2 | 30 1/2 | 31 1/2 | 32 1/2 | 33 1/4 | 34 |
| Chest | 18 1/2 | 20 | 21 1/2 | 23 | 25 | 27 | 29 1/2 | 32 1/2 |
| Raglans and Dolmans Sleeve Length | 33 1/4 | 34 | 34 3/4 | 35 1/2 | 36 1/4 | 37 | 37 3/4 | 38 1/2 |

Body Length at Back: Measured from high point shoulder to finished hem at back.

Chest: Measured across the chest one inch below armhole when laid flat.

Raglans and Dolmans Sleeve Length: Measure from neck edge to finished hem.

SIZE CHARTS

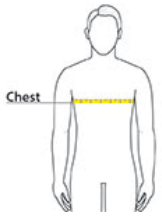
| | XS | S | M | L | XL | 2XL | 3XL | 4XL |
|-------|-------|-------|-------|-------|-------|-------|-------|-------|
| Chest | 32-34 | 35-37 | 38-40 | 41-43 | 44-47 | 48-51 | 52-56 | 57-61 |

SPEC SHEET + MEASUREMENTS



New Era® Stand Out 1/4-Zip. NEA515

HOW TO MEASURE



CHEST

Measure under the arm and around the fullest part of the chest with arms down, keeping tape horizontal.

COLORS

Please note: PMS code information is shown only when an exact match is available.



Black
PMS BLACK
C



Graphite
PMS 7540C



Royal
PMS 2757C



True Navy
PMS 533C