

SPEC SHEET + MEASUREMENTS

SPORT-TEK

Sport-Tek® Lightweight French Terry 1/4-Zip Pullover. ST273

Product photo



Casual and soft, this cotton-rich pullover has a laid-back vibe.

- 6.5-ounce, 59/41 combed ring spun cotton/poly French terry
- Cadet collar
- Tag-free label
- Modified raglan sleeves

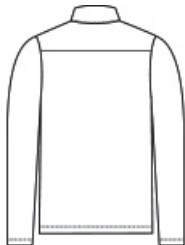
CARE INSTRUCTIONS

Machine wash cold with like colors, only non-chlorine bleach if needed. Tumble dry low, cool iron if necessary.

Sketches



front



back

SPEC SHEET + MEASUREMENTS

SPORT-TEK

Sport-Tek[®] Lightweight French Terry 1/4-Zip Pullover.
ST273

PRODUCT MEASUREMENTS

	XS	S	M	L	XL	2XL	3XL	4XL
Body Length at Back	26 1/2	27 1/2	28 1/2	29 1/2	30 1/2	31 1/2	32	32 1/2
Chest	19	20 1/2	22	23 1/2	25	26 1/2	28 1/2	30 1/2
Sleeve Length from Center Back	34 1/2	35 1/4	36	36 3/4	37 1/2	38 1/4	39	39 3/4

Body Length at Back: Measured from high point shoulder to finished hem at back.

Chest: Measured across the chest one inch below armhole when laid flat.

Sleeve Length from Center Back: Measure from Center Back neck to shoulder point to sleeve hem.

SIZE CHARTS

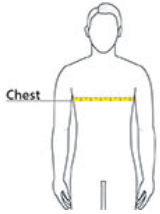
	XS	S	M	L	XL	2XL	3XL	4XL
Chest	32-34	35-37	38-40	41-43	44-46	47-49	50-53	54-57

SPEC SHEET + MEASUREMENTS

SPORT-TEK

Sport-Tek® Lightweight French Terry 1/4-Zip Pullover.
ST273

HOW TO MEASURE



CHEST

Measure under the arm and around the fullest part of the chest with arms down, keeping tape horizontal.

COLORS

Please note: PMS code information is shown only when an exact match is available.



Black
PMS BLACK
C



Heather Black
PMS 426C



Heather Grey
PMS 428C



True Red
PMS 200C



True Royal
PMS 7687C