

# SPEC SHEET + MEASUREMENTS

**SPORT-TEK**

## Sport-Tek® Sport-Wick® Stretch Reflective Heather 1/2-Zip Pullover. ST855

### Product photo



With its all-over reflective heather print, this moisture-wicking pullover is subtle during the day and a standout at night. Plus, it stretches for easy mobility.

- 6.8-ounce, 90/10 poly/spandex jersey
- Soft-brushed backing
- Tag-free label
- Cadet collar
- Reverse coil zipper with clear zipper pull
- Set-in sleeves
- Open cuffs and hem
- Slight drop tail hem

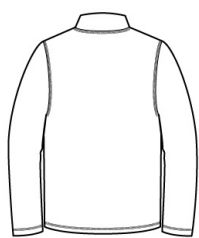
### CARE INSTRUCTIONS

Machine wash cold with like colors. Only non-chlorine bleach. When needed tumble dry low, remove promptly. Cool iron if needed. Do not use softener. Do not dry clean.

### Sketches



front



back

# SPEC SHEET + MEASUREMENTS

**SPORT-TEK**

Sport-Tek<sup>®</sup> Sport-Wick<sup>®</sup> Stretch Reflective Heather 1/2-Zip Pullover. ST855

## PRODUCT MEASUREMENTS

	XS	S	M	L	XL	2XL	3XL	4XL
Body Length at Front	28 1/2	29 1/2	30 1/2	31 1/2	32 1/2	33 1/2	34	34 1/2
Chest	20	21 1/2	23	24 1/2	26	27 1/2	29 1/2	31 1/2
Sleeve Length	33 3/4	34 1/2	35 1/4	36	36 3/4	37 1/2	38 1/4	39

**Body Length at Front:** Measure from high point shoulder to lowest point of hem at front.

**Chest:** Measured across the chest one inch below armhole when laid flat.

**Sleeve Length:** Start at center of neck and measure down shoulder, down sleeve to hem.

## SIZE CHARTS

	XS	S	M	L	XL	2XL	3XL	4XL
Chest	32-34	35-37	38-40	41-43	44-46	47-49	50-53	54-57

## HOW TO MEASURE



### CHEST

Measure under the arm and around the fullest part of the chest with arms down, keeping tape horizontal.