

SPEC SHEET + MEASUREMENTS

Eddie Bauer

Eddie Bauer® Quilted Jacket. EB510

Product photo



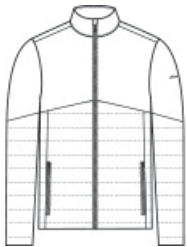
Minimal bulk meets maximized performance in this quilted jacket that is built for your cold-weather adventures.

- 100% polyester shell and lining
- 5-ounce, 100% polyester fill
- Durable water-repellent (DWR) finish
- Exposed, molded zippers with Eddie Bauer logo pulls
- Zippered hand pockets
- Elastic at cuffs
- Adjustable locking drawcord hem
- Contrast heat transfer Eddie Bauer logo on left sleeve

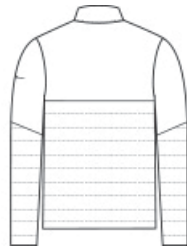
CARE INSTRUCTIONS

Machine Wash Cold With Like Colors. Do Not Use Fabric Softener. Do Not Bleach. Tumble Dry Low. Cool Iron. Do Not Dry Clean.

Sketches



front



back

SPEC SHEET + MEASUREMENTS

Eddie Bauer

Eddie Bauer® Quilted Jacket. EB510

PRODUCT MEASUREMENTS

	XS	S	M	L	XL	2XL	3XL	4XL
Body Length at Back	27	28	29	30	31	32	32 1/2	33
Chest	19 1/2	21	22 1/2	24	25 1/2	27	29	31
Sleeve Length from Center Back	34 3/4	35 1/2	36 1/4	37	37 3/4	38 1/2	39 1/4	40

Body Length at Back: Measured from high point shoulder to finished hem at back.

Chest: Measured across the chest one inch below armhole when laid flat.

Sleeve Length from Center Back: Measure from Center Back neck to shoulder point to sleeve hem.

SIZE CHARTS

	XS	S	M	L	XL	2XL	3XL	4XL
Chest	32-34	35-37	38-40	41-43	44-46	48-50	52-54	55-57

SPEC SHEET + MEASUREMENTS

Eddie Bauer

Eddie Bauer® Quilted Jacket. EB510

HOW TO MEASURE



CHEST

Measure under the arm and around the fullest part of the chest with arms down, keeping tape horizontal.

COLORS

Please note: PMS code information is shown only when an exact match is available.



Cobalt Blue
PMS 654C



Deep Black
PMS BLACK
C



Iron Gate
PMS 7540C



River Blue
Navy
PMS 533C