

# SPEC SHEET + MEASUREMENTS



OGIO® Women's Pivot Soft Shell. LOE721

## Product photo



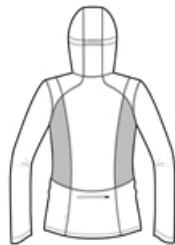
WATER-RESISTANT  
HOOD PIVOTS FOR CLEARER PERIPHERAL VISION  
REFLECTIVE DETAILS

- 100% poly interlock bonded to poly interlock with a laminated film insert for water resistance
- 5,000MM fabric waterproof rating
- 5,000G/M<sup>2</sup> fabric breathability rating
- Articulated shaping for ease of movement
- Reflective OGIO heat transfer label for tag-free comfort
- Reflective O heat transfer at hood
- Zip-through cowl collar
- Reflective zippered back stash pocket
- Lower front zippered pockets
- Set-in sleeves with shaped cuffs and thumbholes for warmth
- Reflective stacked O heat transfers at sleeves
- Slight drop tail hem with reflective O heat transfer at back left hem

## Sketches



front



back

# SPEC SHEET + MEASUREMENTS



OGIO® Women's Pivot Soft Shell. LOE721

## PRODUCT MEASUREMENTS

	XS	S	M	L	XL	2XL	3XL	4XL
Body Length at Back	27	27 5/8	28 1/4	28 7/8	29 1/2	30 1/8	30 3/4	31 3/8
Bust	17 1/2	18 1/2	19 1/2	21	22 1/2	24	26	28
Size	2	4/6	8/10	12/14	16/18	20/22	24/26	28/30
Sleeve Length	33	33 1/2	34	34 5/8	35 1/4	35 7/8	36 1/4	36 5/8

**Body Length at Back:** Measured from high point shoulder to finished hem at back.

**Bust:** Measured across the chest one inch below armhole when laid flat.

**Sleeve Length:** Start at center of neck and measure down shoulder, down sleeve to hem.

## SIZE CHARTS

	XS	S	M	L	XL	2XL	3XL	4XL
Bust	32-34	35-36	37-38	39-41	42-44	45-47	48-51	52-55
Size	2	4/6	8/10	12/14	16/18	20/22	24/26	28/30

# SPEC SHEET + MEASUREMENTS



OGIO® Women's Pivot Soft Shell. LOE721

## HOW TO MEASURE

---



### **BUST**

Measure under the arm and around the fullest part of the bust with arms down, keeping tape horizontal.