

SPEC SHEET + MEASUREMENTS



OGIO® Women's Transcend Full-Zip. LOG860

Product photo



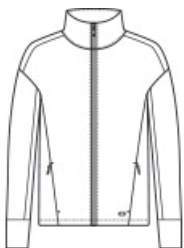
Perfectly polished, this elevated, sueded full-zip performs with stretch and transcends the line between work and leisure.

- 9.1-ounce, 50/44/6 rayon/recycled poly/spandex double knit fleece
- OGIO heat transfer label for tag-free comfort
- Neck taping
- Cadet collar
- Embossed OGIO logo locker loop
- Reverse coil zipper with debossed, brushed silver O icon pull
- Two-piece sleeves
- Front and back seaming
- Forward shoulders
- Hidden zippered pockets with silver pulls
- Banded cuffs
- Embroidered O icon on left hem

CARE INSTRUCTIONS

Turn Garment Inside Out. Machine Wash Cold With Like Colors. Do Not Use Fabric Softener. Do Not Bleach. Tumble Dry Low. Remove Promptly. Cool Iron, If Necessary.

Sketches



front



back

SPEC SHEET + MEASUREMENTS



OGIO® Women's Transcend Full-Zip. LOG860

PRODUCT MEASUREMENTS

	XS	S	M	L	XL	2XL	3XL	4XL
Body Length at Back	23	23 1/2	24	24 1/2	25	25 1/2	26	26 1/2
Bust	18 1/2	19 1/2	20 1/2	22	23 1/2	25	27	29
Size	2	4/6	8/10	12/14	16/18	20/22	24/26	28/30
Sleeve Length from Center Back	30 1/2	31	31 1/2	32 1/8	32 3/4	33 3/8	33 3/4	34 1/8

Body Length at Back: Measured from high point shoulder to finished hem at back.

Bust: Measured across the chest one inch below armhole when laid flat.

Sleeve Length from Center Back: Measure from Center Back neck to shoulder point to sleeve hem.

SIZE CHARTS

	XS	S	M	L	XL	2XL	3XL	4XL
Bust	32-34	35-36	37-38	39-41	42-44	45-47	48-51	52-55
Size	2	4/6	8/10	12/14	16/18	20/22	24/26	28/30

SPEC SHEET + MEASUREMENTS



OGIO® Women's Transcend Full-Zip. LOG860

HOW TO MEASURE



BUST

Measure under the arm and around the fullest part of the bust with arms down, keeping tape horizontal.

COLORS

Please note: PMS code information is shown only when an exact match is available.



Blacktop
PMS Black C



Blue Mist
PMS 2158C



Tarmac Grey
PMS 7540C