

SPEC SHEET + MEASUREMENTS



Carhartt® Tall Thermal-Lined Duck Active Jac. CTT106678

Product photo



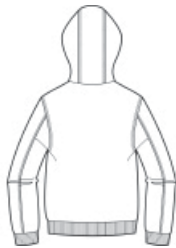
Whether you're on a land survey or construction road crew, this hooded jacket is designed to keep you comfortable when the weather is iffy.

- 12-ounce, firm hand, 100% ring spun cotton duck canvas
- Wind Fighter® technology tames wind
- 100% polyester thermal lining
- Attached thermal-lined three-piece hood with drawcord closure
- Full-length brass front zipper
- Two interior pockets: one zippered, one hook and loop
- Two large lower-front pockets
- Rib knit cuffs and waistband
- Carhartt-strong, triple-stitched main seams
- Carhartt label sewn on left pocket
- Carhartt Warmth Rating Earned: Level 1—Warm
- Loose fit

Sketches



front



back

CARE INSTRUCTIONS

Color Black: Machine wash cold with like colors. Do not bleach. Tumble dry low remove promptly. Steam iron shell only. All colors except Black: Machine wash warm with like colors. Do not bleach. Tumble dry medium remove promptly. Steam iron shell only.

PRODUCT MEASUREMENTS

	LT	XLT	2XLT	3XLT	4XLT
Body Length at Back	31	32	32	33	33
Chest	27 3/4	29 3/4	31 3/4	33 3/4	35 3/4
Sleeve Length from Center Back	40 1/2	41 1/8	41 3/4	42 1/4	42 3/4

Body Length at Back: Measured from high point shoulder to finished hem at back.

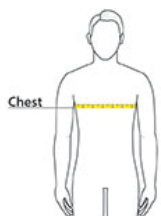
Chest: Measured across the chest one inch below armhole when laid flat.

Sleeve Length from Center Back: Measure from Center Back neck to shoulder point to sleeve hem.

SIZE CHARTS

	S	M	L	XL	2XL	3XL	4XL	5XL	6XL
Chest	34-36	38-40	42-44	46-48	50-52	54-56	58-60	62-64	66-68

HOW TO MEASURE



CHEST

Measure under the arm and around the fullest part of the chest with arms down, keeping tape horizontal.

COLORS

Please note: PMS code information is shown only when an exact match is available.



Black
PMS BLACK C



Carhartt Brown
PMS 463C